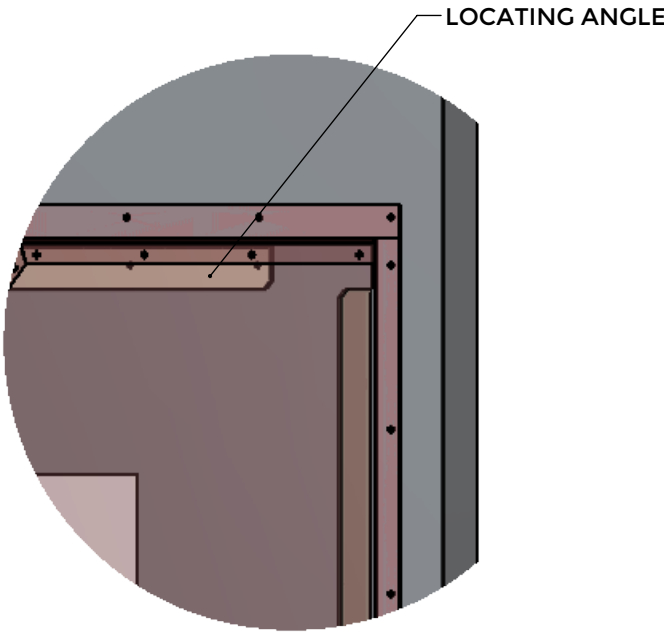
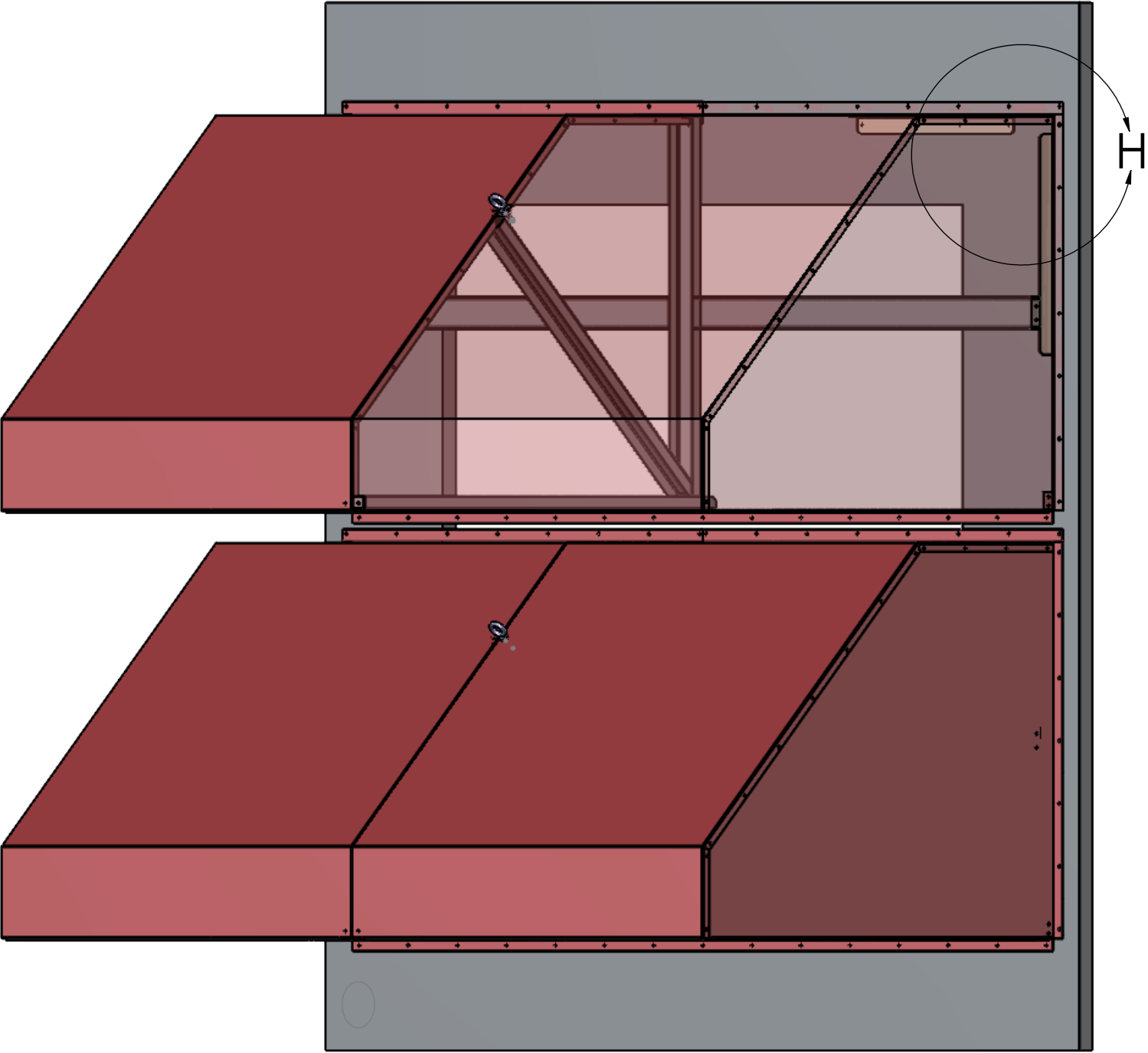



COMPOSITE HOOD

- NOTES:
- INSTALLATION OF EACH HOOD STARTS FROM BOTTOM TO TOP
 - ALIGN EACH HOOD WITH THE LOCATING ANGLE

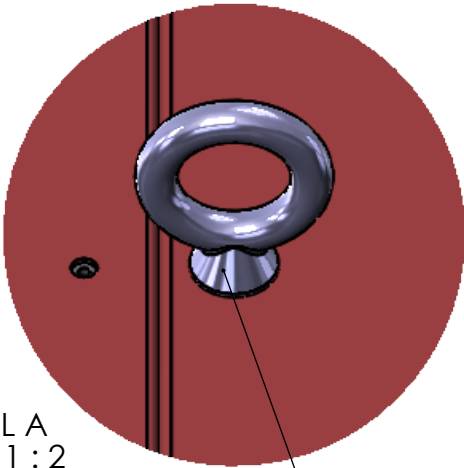


DETAIL H
SCALE 1 : 8



GENERAL TOLERANCE UNLESS OTHERWISE STATED		CAMBRIDGEPORT					
DIMENSIONS: INCHES X/XX ± 1/16 X.XX ± 0.0625 X.XXX ± 0.0625 ANGLES ± 1°	PROJECTION 	JOB NO:	1	PART NUMBER: FIRST CONFIGURATION			
		UNIT TAG:	HOOD ASSEMBLY	PART NAME: COMPOSITE HOOD (HIDDEN);			
		DRAWN BY:	TL				
		DATE:	8/13/2025				
				REV:			SCALE: 1:32

SINGLE HOOD



DETAIL A
SCALE 1 : 2

EYE BOLT
(HEX NUT ON OPPOSITE END)

LOCATING ANGLE

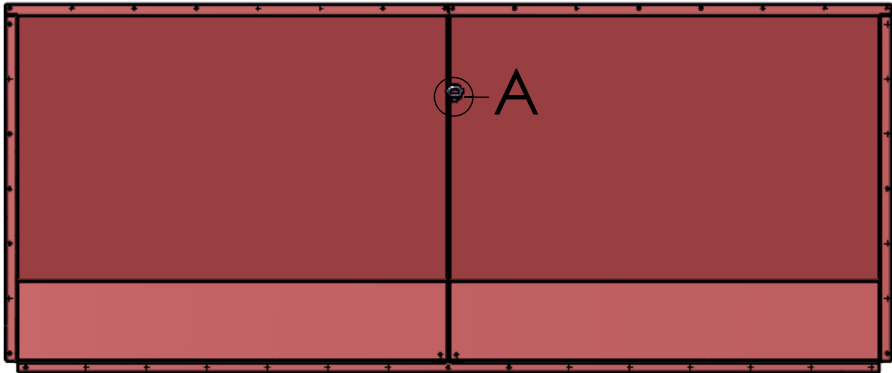
HOOD TOP

HOOD SIDE


BIRDSCREEN

HOOD THROAT

SPLIT SUPPORTS



- REQUIRED HARDWARE:
- SILICONE CAULKING
 - 5/16" X 1" SS GROMMETTED SCREWS
 - 5/16" X 1" ZINC GROMMETTED SCREWS

GENERAL TOLERANCE UNLESS OTHERWISE STATED		CAMBRIDGEPORT			
DIMENSIONS: INCHES X/XX ± 1/16 X.XX ± 0.0625 X.XXX ± 0.0625 ANGLES ± 1°	PROJECTION 	JOB NO: 1	PART NUMBER: OA-1		
		UNIT TAG: 1	PART NAME: OA HOOD ASSY;		
		DRAWN BY: TL			
		DATE: 8/13/2025			
			REV:		SCALE: 1:24 SHEET 2 OF 2