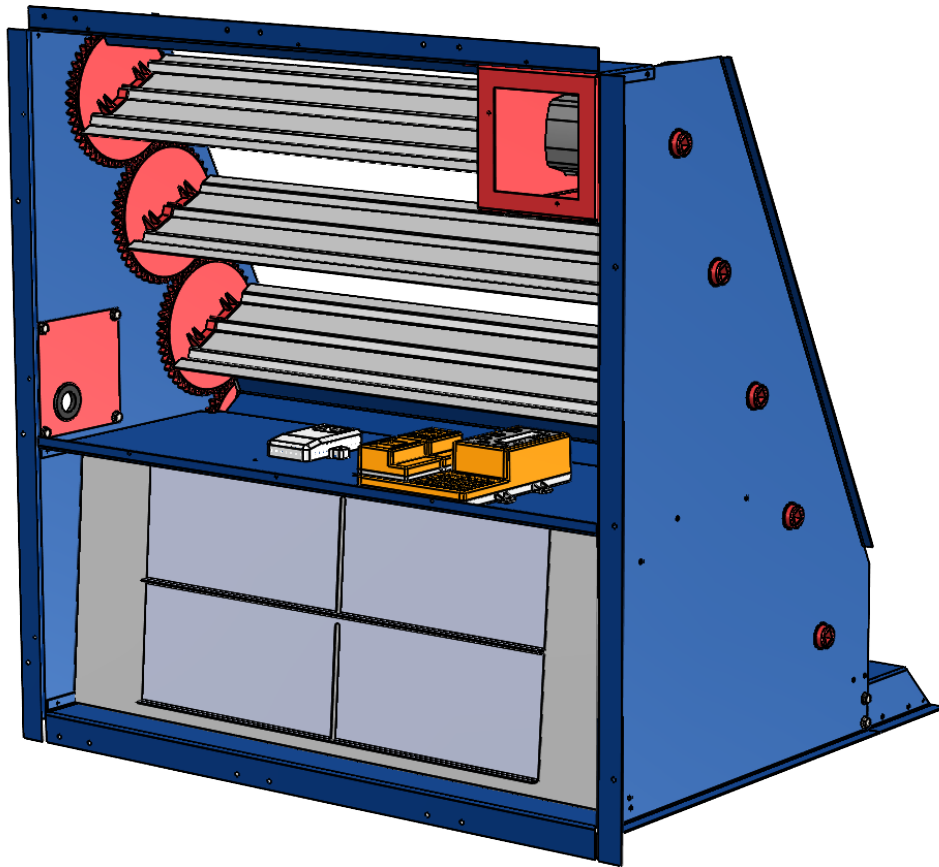


INSTALLATION INSTRUCTIONS FOR 3-12.5 TON YORK PREDATOR GEN 6 OR OLDER ECONOMIZER DOWNSHOT CONFIGURATION



CAS PART NUMBER 1025869

READ COMPLETELY BEFORE INSTALLING!!!

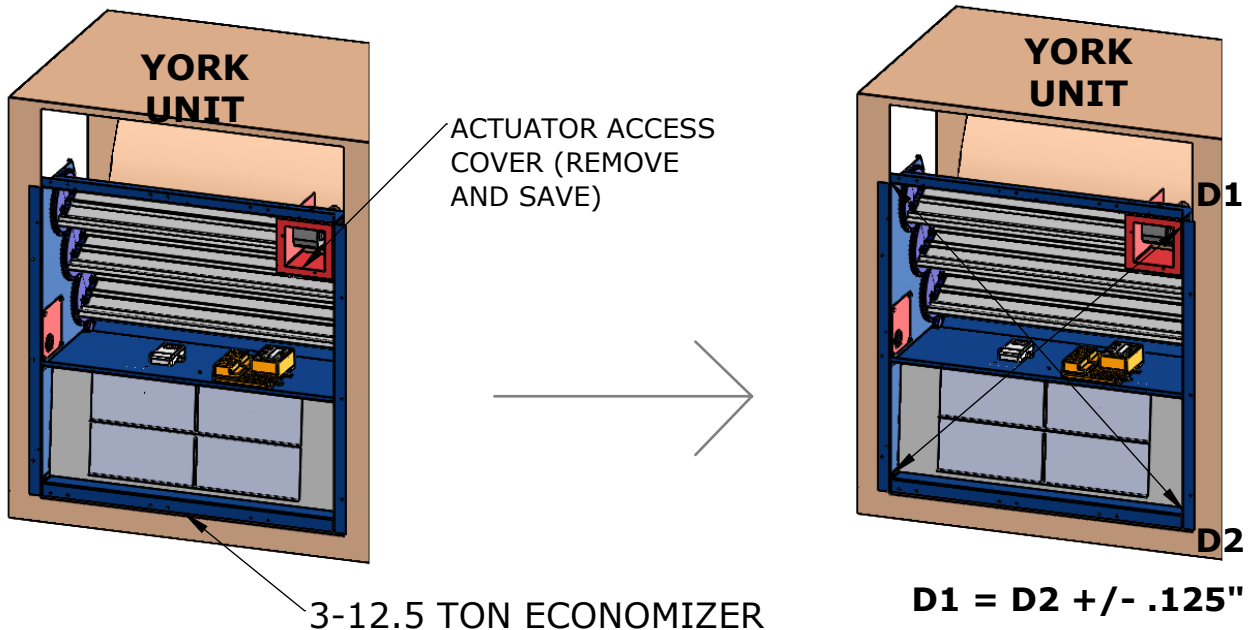
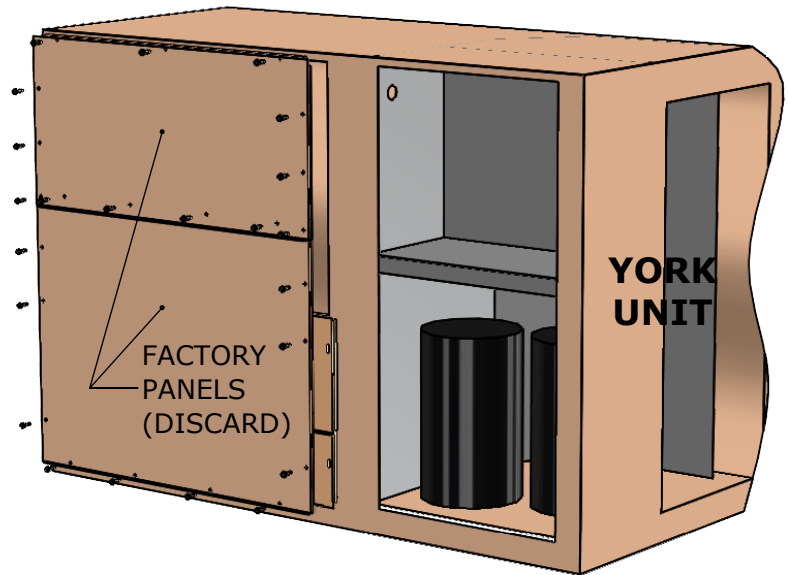
CAMBRIDGEPORT IS NOT RESPONSIBLE FOR IMPROPERLY INSTALLED EQUIPMENT

**BEFORE BEGINNING VERIFY DOWNSHOT ECONOMIZER CONFIGURATION
IF ECONOMIZER IS IN SIDESHOT CONFIGURATION SKIP AHEAD TO PAGE 6**

STEP 1: PANEL REMOVAL

REMOVE TWO (2) FACTORY BLOCK OFF PANELS ON SIDE OF UNIT.

DISCARD PANELS AS THEY WILL NOT BE NECESSARY ONCE ECONOMIZER IS INSTALLED.

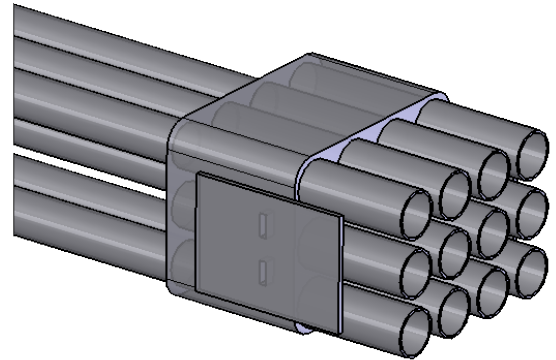
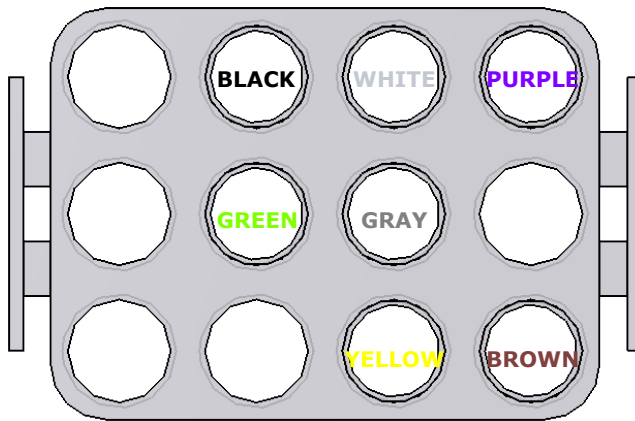


STEP 2: ECONOMIZER INSTALL

PLACE ECONOMIZER DAMPER ASSEMBLY INTO YORK UNIT POSITIONED AS SHOWN. USING PRE-PUNCHED HOLES IN DAMPER SIDE AND BOTTOM FLANGES, SECURE ECONOMIZER TO UNIT WITH SCREWS PROVIDED IN HARDWARE BAG.

WARNING: ECONOMIZER MUST BE INSTALLED "SQUARE" OR COMPONENT DAMAGE WILL RESULT! CAMBRIDGEPORT WILL NOT ACCEPT RESPONSIBILITY FOR DAMAGED PARTS DUE TO IMPROPER INSTALLATION/OPERATION!

REMOVE ACTUATOR ACCESS COVER (SEE ABOVE) AND SAVE FOR LATER.



12-PIN ECONOMIZER HARNESS (SUPPLIED BY CAMBRIDGEPORT)

STEP 5

PLUG ECONOMIZER HARNESS (SHOWN ABOVE) INTO THE UNIT WIRING HARNESS. ECONOMIZER IS PRE-WIRED AT CAMBRIDGEPORT FACTORY.

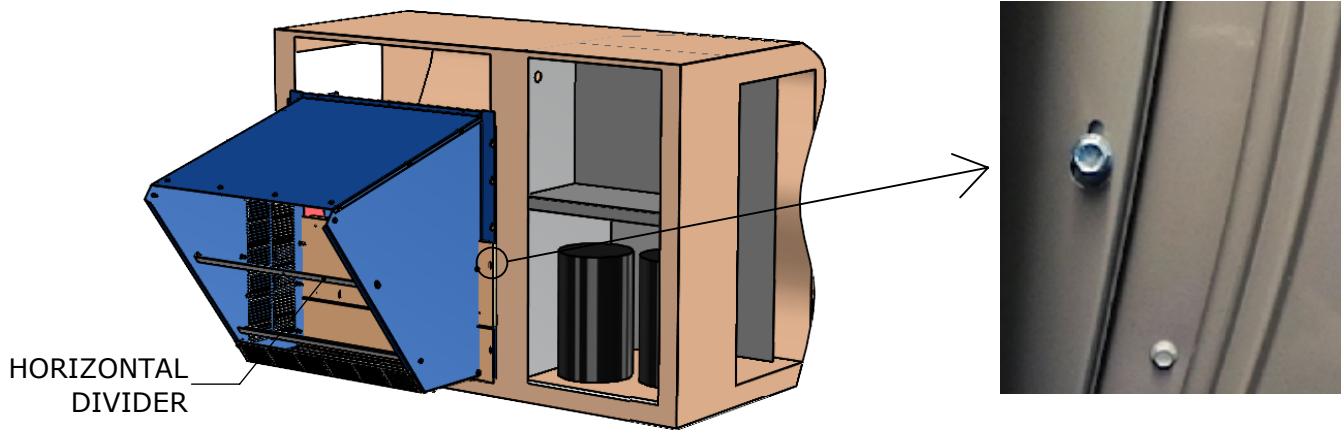
STEP 6

MIXED AIR SENSOR INSTALLATION (**NOTE: A MIXED AIR SENSOR IS REQUIRED IN ALL APPLICATIONS**).

REMOVE MIXED AIR SENSOR FROM HARDWARE BAG AND INSTALL IT IN BLOWER COMPARTMENT OF UNIT. MOUNT SENSOR DIRECTLY TO THE SHEET METAL USING SELF TAPPING SCREWS OR ZIP-TIE TO HARNESS. PLUG PINK AND VIOLET WIRES FROM MIXED AIR SENSOR INTO TWO BLACK INSULATED CONNECTORS LOCATED ON LEFT HAND SIDE OF BLOWER COMPARTMENT. REFER TO INCLUDED BELIMO LITERATURE FOR INITIAL SET-UP AND CHECK-OUT PROCEDURES.

STEP 3: HOOD

INSTALL HOOD AS SHOWN USING TEARDROP SLOTS ON LEFT AND RIGHT HAND SIDES. SIDE FLANGES OF ECONO HOOD SHOULD REST ON UNIT BASE RAIL ONCE INSTALLED. ENSURE HORIZONTAL DIVIDER IS INSTALLED IN HOOD FOR DOWNSHOT ORIENTATION ECONOMIZING

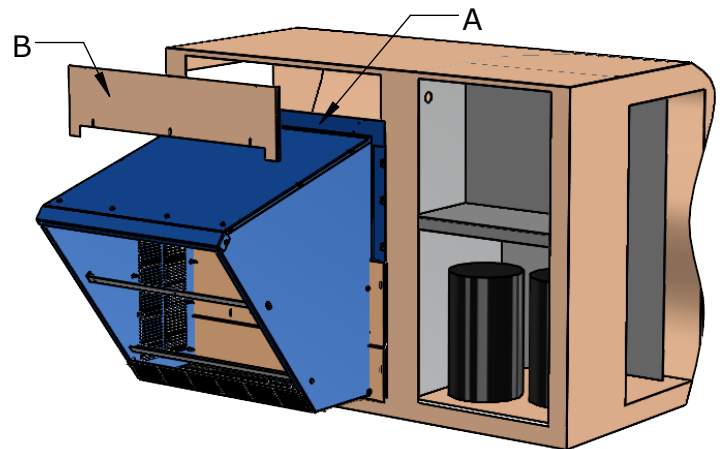


STEP 4: BLOCK OFFS

i) SMALL CABINET - INSTALL PANEL "A" FOLLOWED BY PANEL "B" ON ABOVE HOOD AS SHOWN.

SMALL CABINET UNITS

**ZF 078-090
ZH 037-090
ZJ 037-061
ZR 037-090**

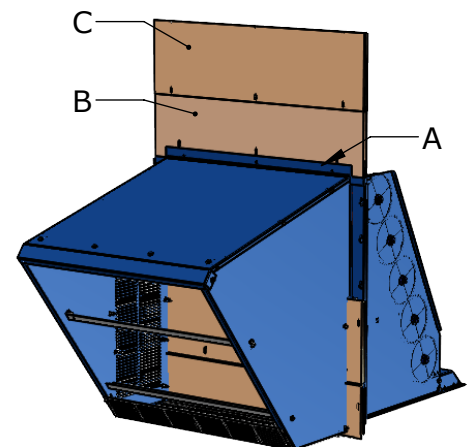


SMALL CABINET

ii) LARGE CABINET - INSTALL PANEL "A" FOLLOWED BY PANEL "B" AND FINALLY PANEL "C" ABOVE HOOD AS SHOWN.

LARGE CABINET UNITS

**ZF 102-150
ZH 102-150
ZJ 078-150
ZR 102-150**



LARGE CABINET (UNIT NOT SHOWN)

STEP 7: HOOD FILTERS

LOOSEN SCREWS HOLDING FILTER RETAINING STRIP AND REMOVE. NOTE: FILTER RETAINING STRIP MAY SHIP PRE-REMOVED FROM THE FACTORY. ATTACH FILTER CLIPS TO TOP AND BOTTOM OF FILTERS TO HOLD IN PLACE [SEE FIGURES 1 & 2]. SLIDE FILTERS INTO HOOD AS SHOWN IN FIGURE 2. RE-INSTALL FILTER RETAINING STRIP TO HOLD FILTERS IN PLACE [SEE FIGURES 3 & 4].

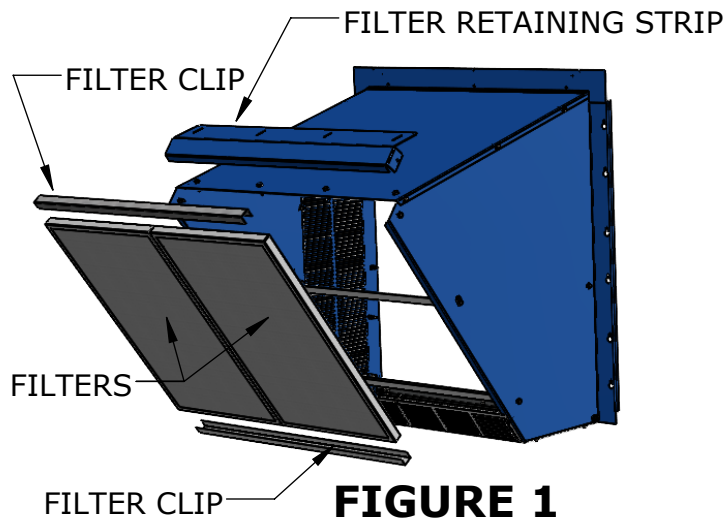


FIGURE 1

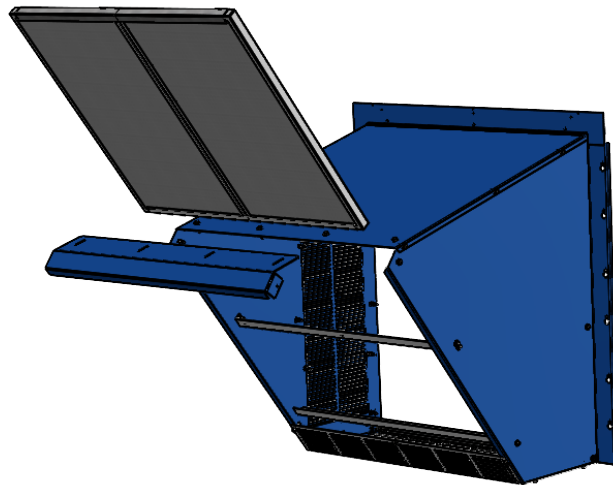


FIGURE 2

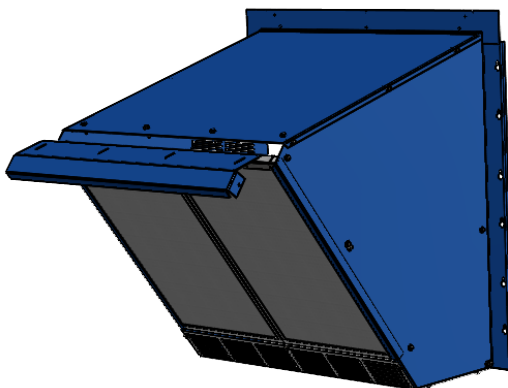


FIGURE 3

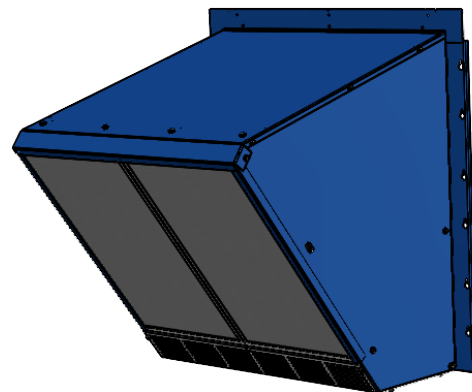
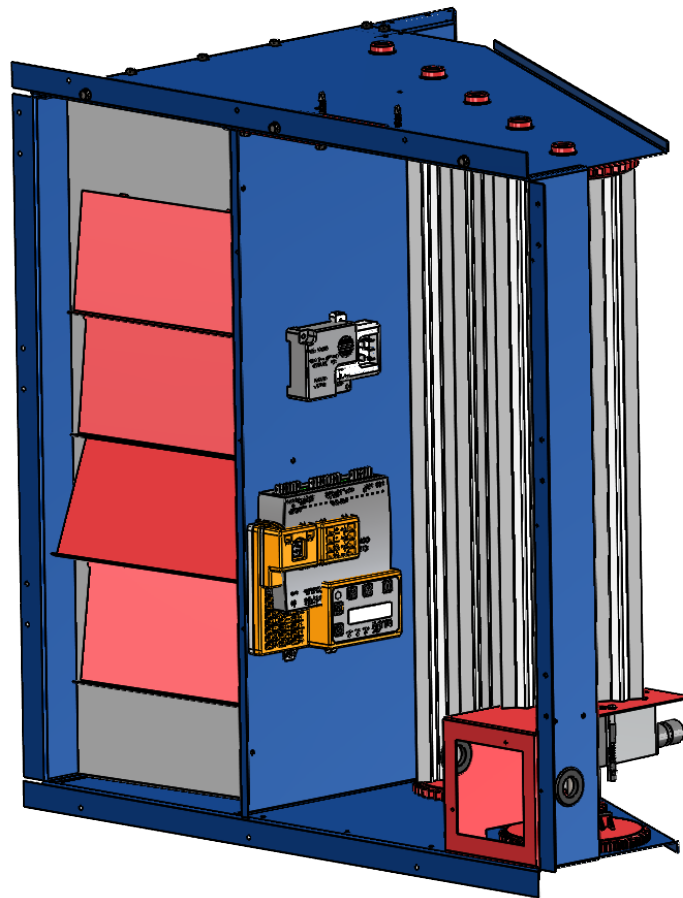


FIGURE 4

INSTALLATION INSTRUCTIONS FOR 3-12.5 TON YORK PREDATOR GEN 6 OR OLDER ECONOMIZER SIDESHOT CONFIGURATION

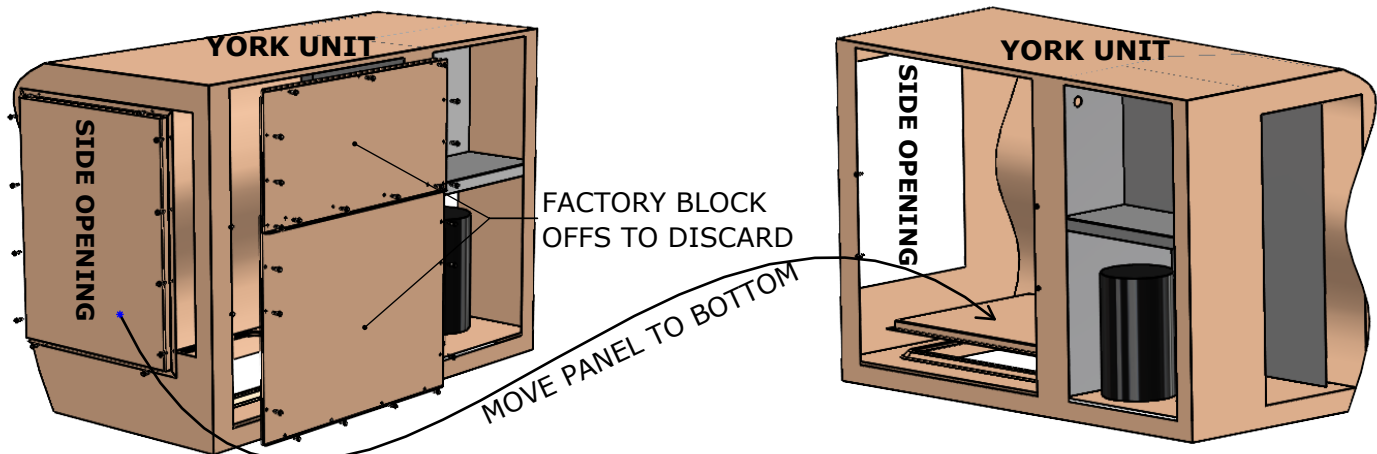


CAS PART NUMBER 1025869

READ COMPLETELY BEFORE INSTALLING!!!

CAMBRIDGEPORT IS NOT RESPONSIBLE FOR IMPROPERLY INSTALLED EQUIPMENT

**BEFORE BEGINNING VERIFY SIDESHOT ECONOMIZER CONFIGURATION
IF ECONOMIZER IS IN DOWNSHOT CONFIGURATION REFER BACK TO PAGE 1**

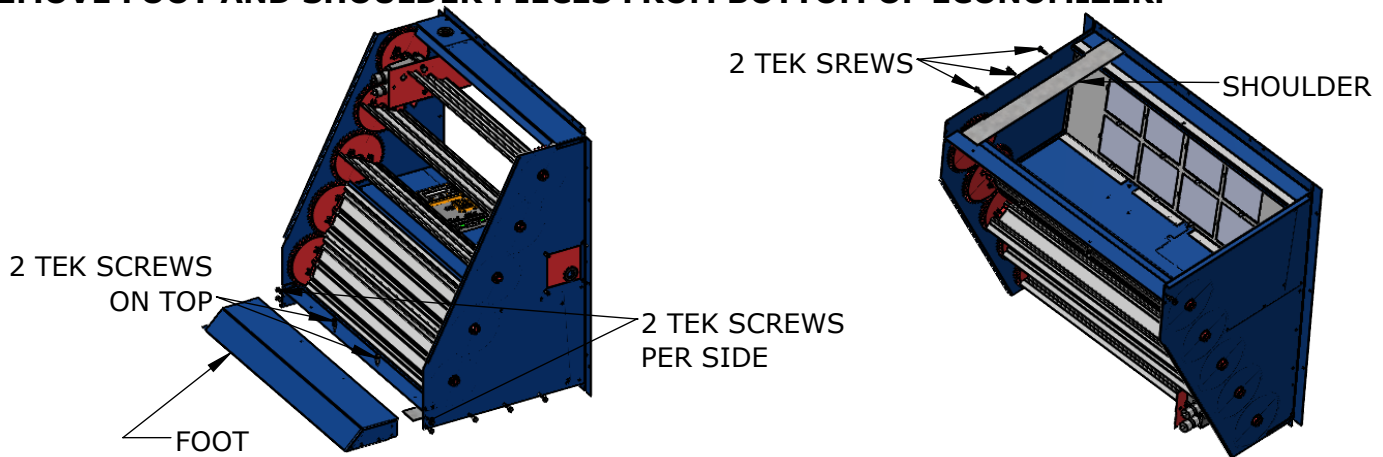


STEP 1: PANEL REMOVAL

REMOVE TWO (2) FACTORY BLOCK OFF PANELS ON SIDE OF UNIT AND DISCARD. REMOVE SIDE RETURN AIR OPENING PANEL (SEE ABOVE) AND INSTALL ON UNUSED BOTTOM OPENING.

STEP 2: ECONOMIZER PREPARATION

REMOVE FOOT AND SHOULDER PIECES FROM BOTTOM OF ECONOMIZER.

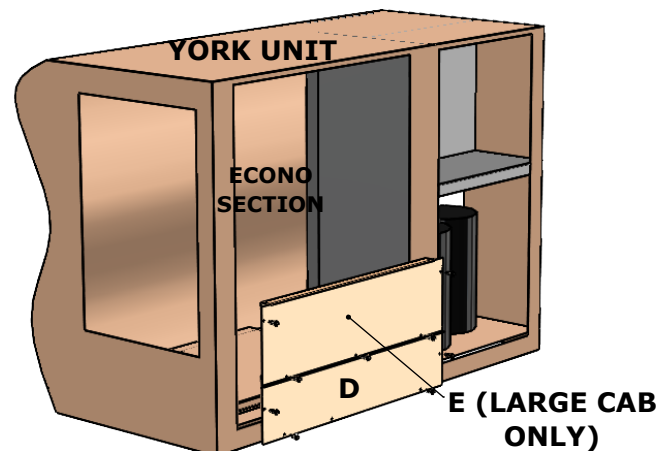


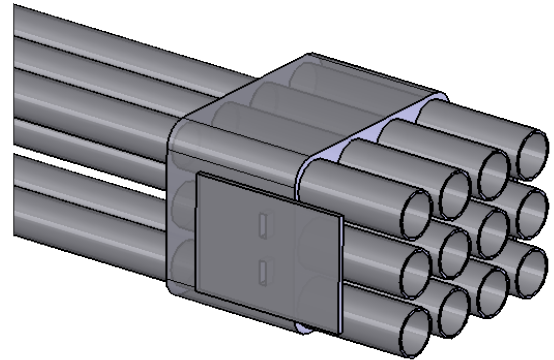
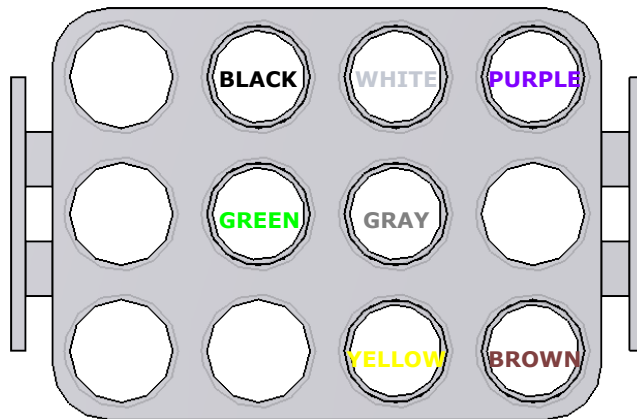
STEP 3: BOTTOM BLOCK OFFS

INSTALL PANEL "D" AT BOTTOM OF ECONOMIZER OPENING. IF LARGE CABINET YORK UNIT IS INSTALLED, ALSO ADD PANEL "E" ABOVE "D" (SEE BELOW)

LARGE CABINET UNITS

ZF 102-150
ZH 102-150
ZJ 078-150
ZR 102-150





12-PIN ECONOMIZER HARNESS (SUPPLIED BY CAMBRIDGEPORT)

STEP 4

PLUG ECONOMIZER HARNESS (SHOWN ABOVE) INTO THE UNIT WIRING HARNESS. ECONOMIZER IS PRE-WIRED AT CAMBRIDGEPORT FACTORY.

STEP 5

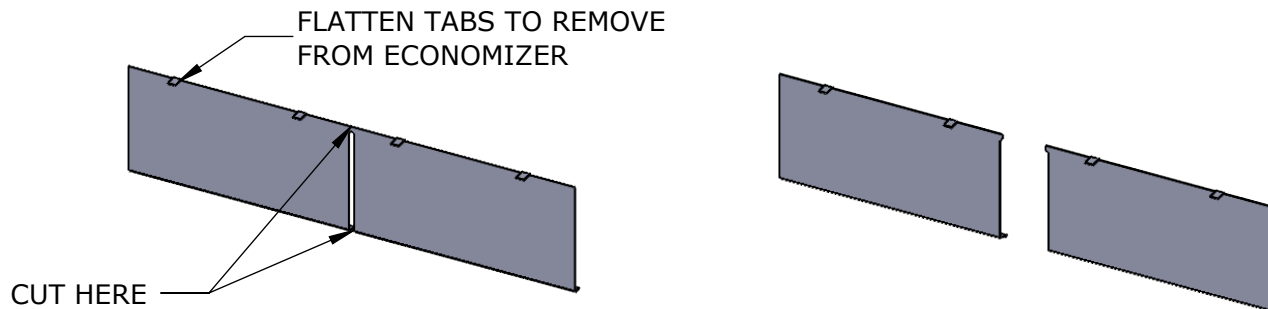
MIXED AIR SENSOR INSTALLATION (**NOTE: A MIXED AIR SENSOR IS REQUIRED IN ALL APPLICATIONS**).

REMOVE MIXED AIR SENSOR FROM HARDWARE BAG AND INSTALL IT IN BLOWER COMPARTMENT OF UNIT. MOUNT SENSOR DIRECTLY TO THE SHEET METAL USING SELF TAPPING SCREWS OR ZIP-TIE TO HARNESS. PLUG PINK AND VIOLET WIRES FROM MIXED AIR SENSOR INTO TWO BLACK INSULATED CONNECTORS LOCATED ON LEFT HAND SIDE OF BLOWER COMPARTMENT. REFER TO INCLUDED BELIMO LITERATURE FOR INITIAL SET-UP AND CHECK-OUT PROCEDURES.

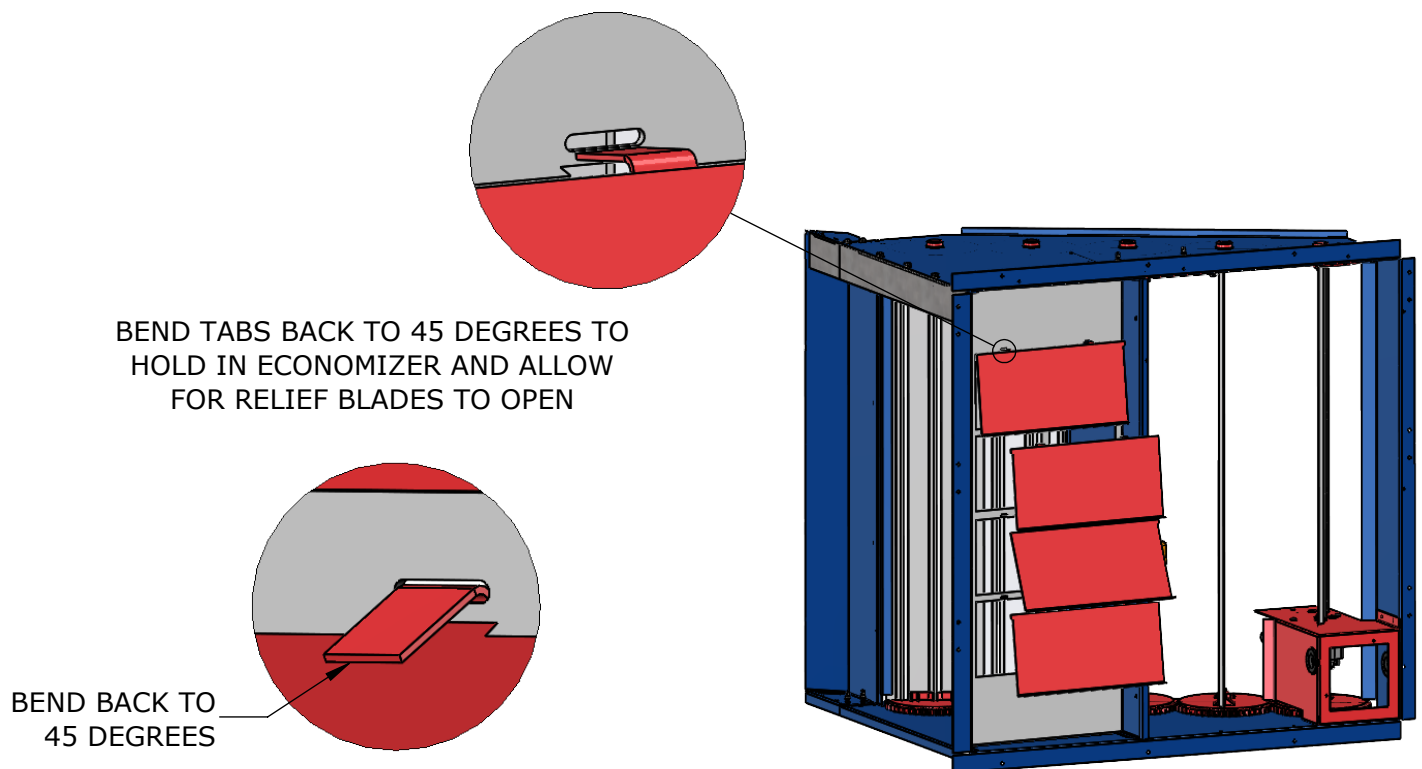
STEP 6: BAROMETRIC RELIEF BLADES

NOTE: BAROMETRIC RELIEF BLADES ARE SHIPPED CONFIGURED FOR DOWNSHOT ECONOMIZERS. REPOSITION BLADES FOR HORIZONTAL APPLICATION

FLATTEN TABS, REMOVE BLADES FROM ECONOMIZER, THEN CUT AT SLOTS



ROTATE BLADES 90 DEGREES AND PLACE IN ECONOMIZER AT FOUR LOCATIONS

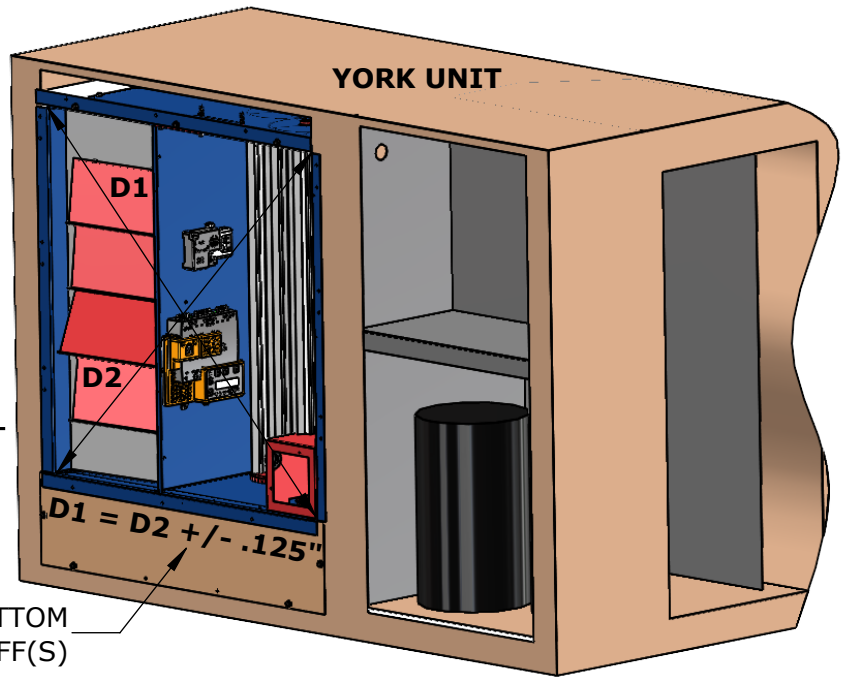


STEP 7: ECONOMIZER INSTALL

PLACE ECONOMIZER DAMPER ASSEMBLY INTO YORK UNIT POSITIONED AS SHOWN. USING PRE-PUNCHED HOLES IN DAMPER SIDE AND BOTTOM FLANGES, SECURE ECONOMIZER TO UNIT WITH SCREWS PROVIDED IN HARDWARE BAG.

WARNING: ECONOMIZER MUST BE INSTALLED SQUARE OR COMPONENT DAMAGE WILL RESULT!
CAMBRIDGEPORT WILL NOT ACCEPT RESPONSIBILITY FOR DAMAGED PARTS DUE TO IMPROPER INSTALLATION/OPERATION!

BOTTOM
BLOCK-OFF(S)



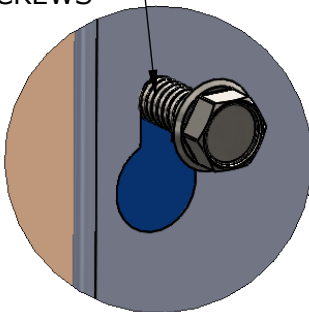
STEP 8: HOOD INSTALL

LOOSEN SCREWS PREVIOUSLY USED TO INSTALL ECONOMIZER. SLIDE TEARDROP SLOTS ON SIDE FLANGES OF WEATHER HOOD OVER SCREWS AND TIGHTEN TO SECURE WEATHER HOOD IN PLACE (SEE DETAIL "B" BELOW).

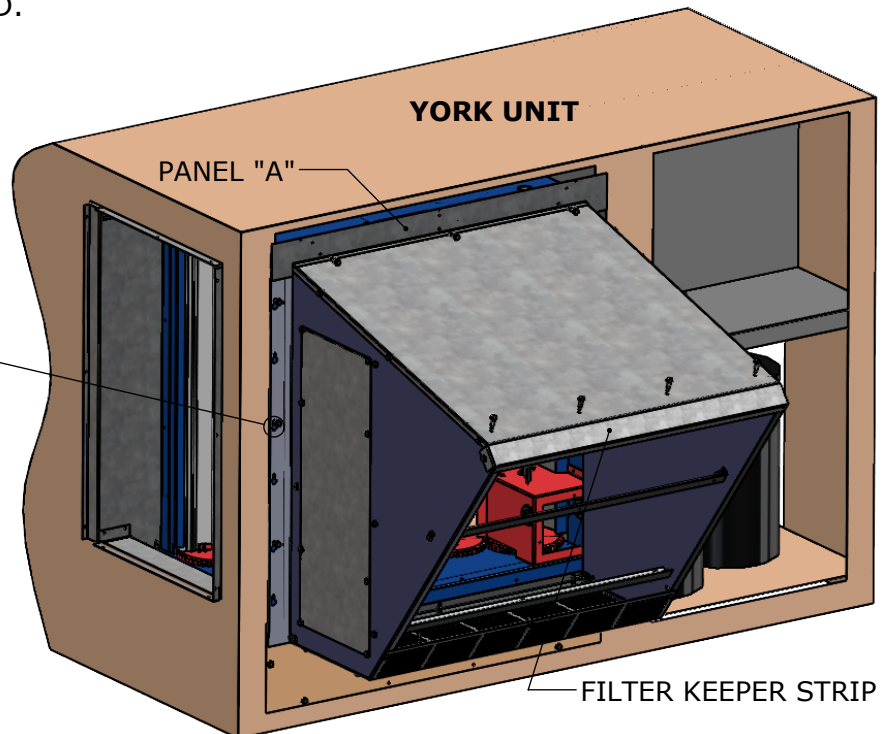
INSTALL TRIM RING PANEL "A" ABOVE WEATHERHOOD. PANEL SHOULD REST UNDERNEATH TOP CAP OF YORK UNIT.

REMOVE FILTER KEEPER STRIP (SEE BELOW). NOTE: FILTER KEEPER STRIP MAY BE REMOVED AT FACTORY AND SHIPPED UNASSEMBLED.

LOOSEN SCREWS



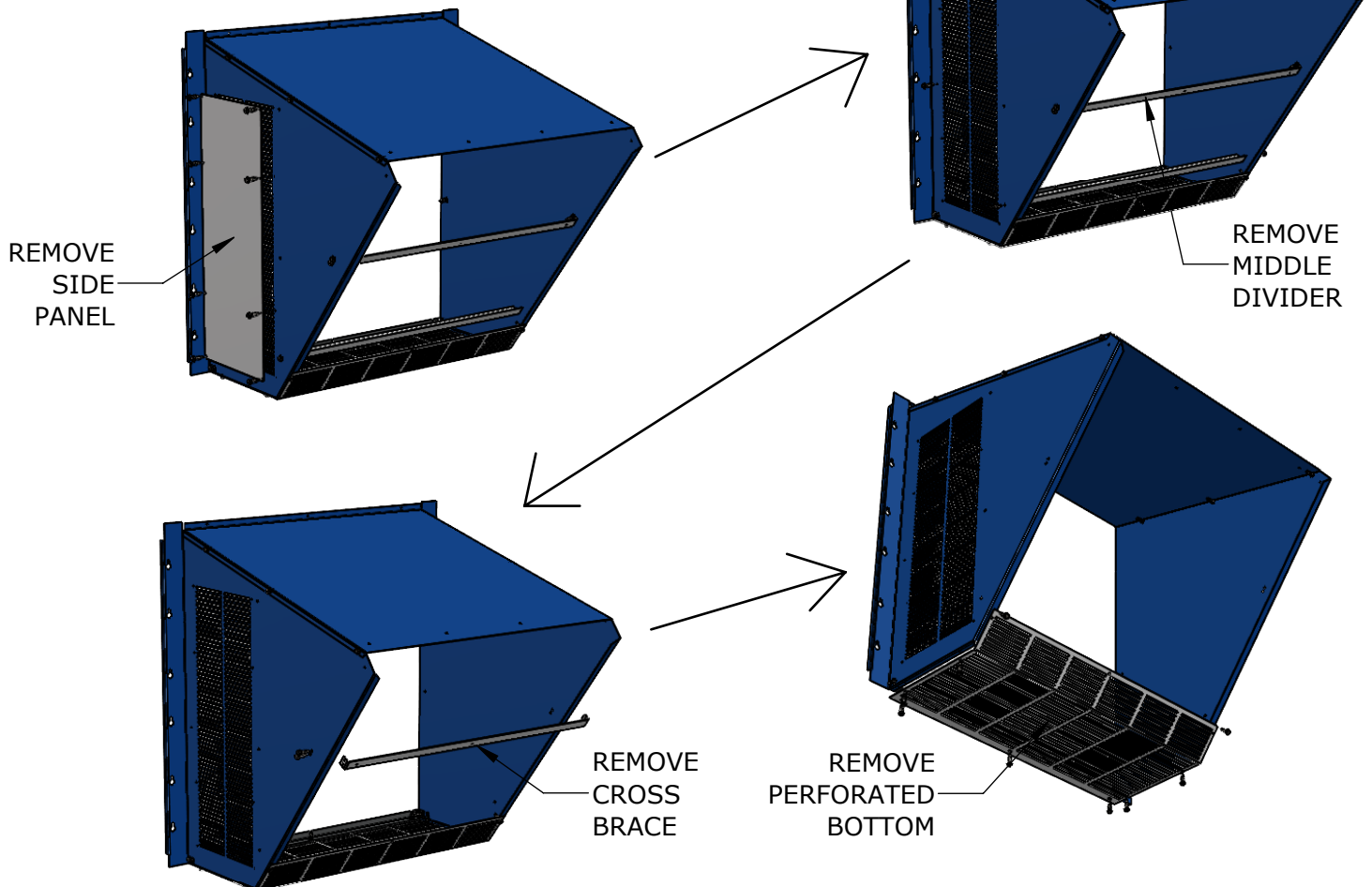
DETAIL B



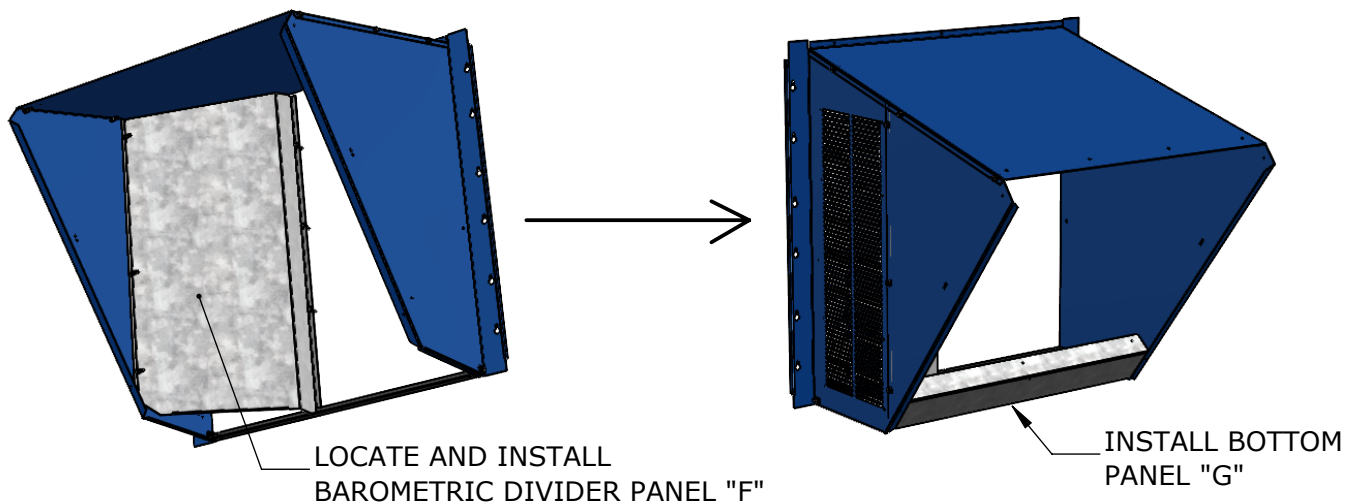
STEP 9: SIDESHOT HOOD PREPARATION

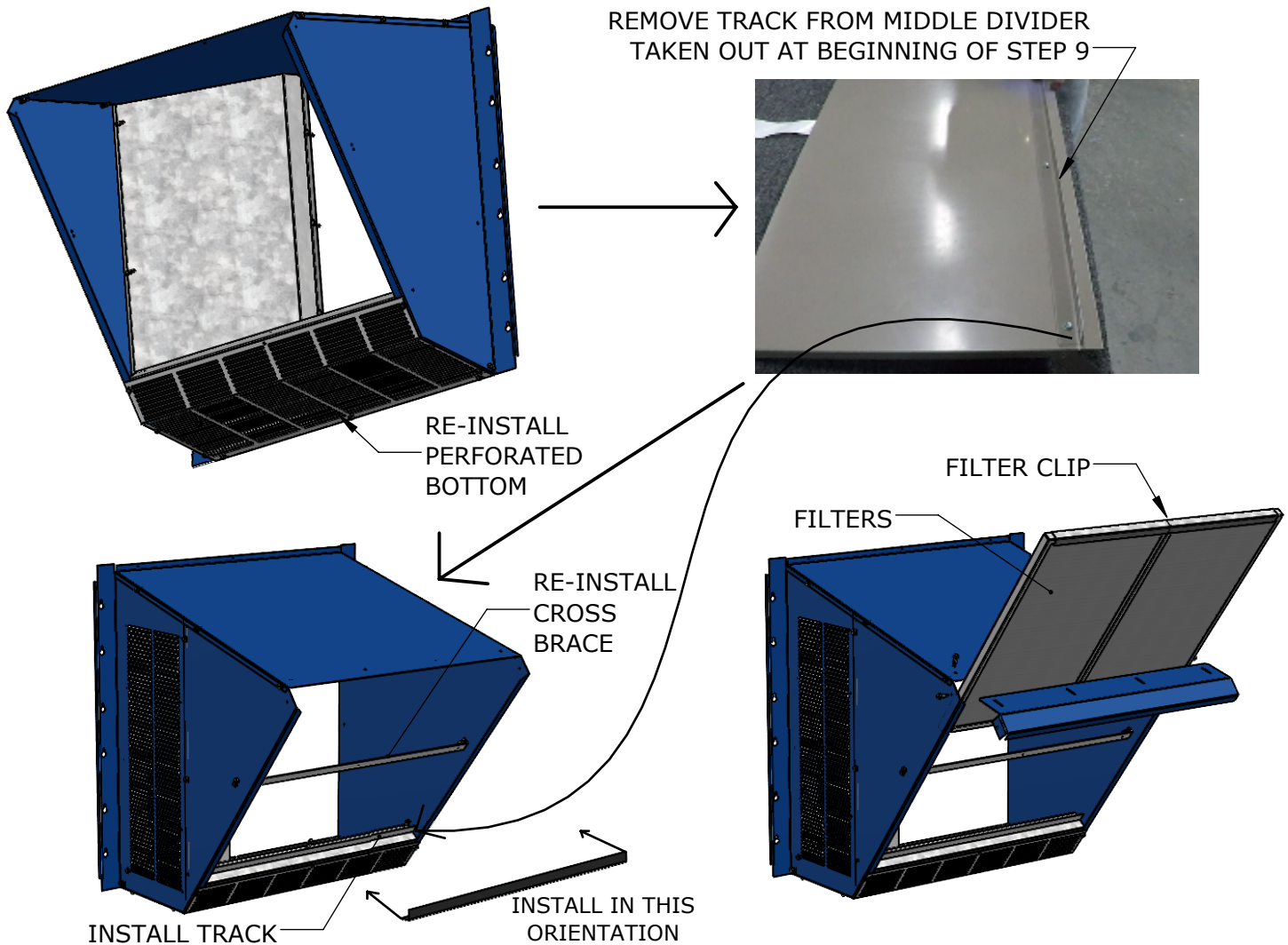
NOTE: HOOD IS SHIPPED FOR DOWNSHOT ORIENTATION

PART ONE: REMOVAL OF EXISTING PARTS



PART TWO: INSTALL PARTS FOR SIDESHOT AIR FLOW



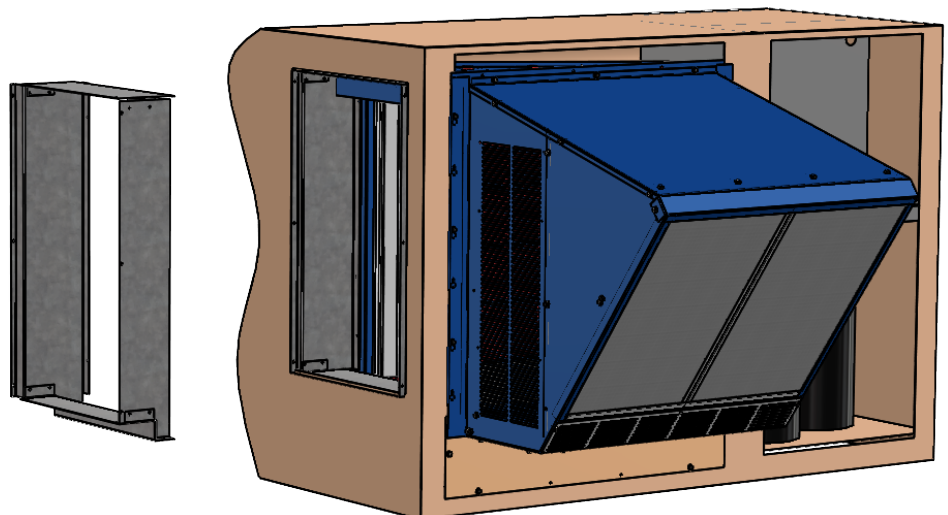


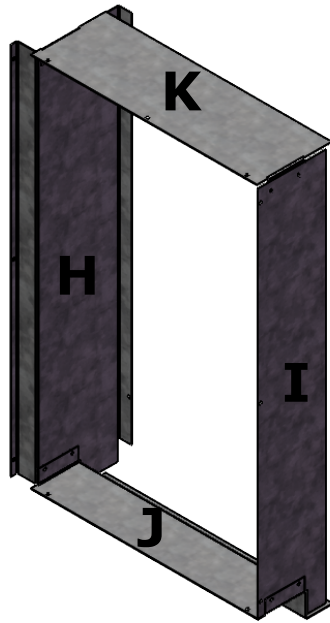
SLIDE FILTER CLIP OVER TOP AND BOTTOM OF FILTERS AND SLIDE FILTERS INTO HOOD. RE-INSTALL FILTER KEEPER STRIP AND WEATHER HOOD INSTALL IS COMPLETE.

STEP 10: SAFING INSTALL

FOR ALL UNITS! INSTALL SAFING PIECES IN SIDE RETURN OPENING BETWEEN UNIT SIDE PANEL AND ECONOMIZER DAMPER ASSEMBLY. ENSURE ALL GAPS ARE COVERED AND SAFING IS SECURED BETWEEN UNIT AND DAMPER. INSTALL PIECES IN THE FOLLOWING ORDER:

- 1) LEFT SAFING WALL
- 2) RIGHT SAFING WALL
- 3) BOTTOM SAFING FLOOR
- 4) TOP SAFING CEILING



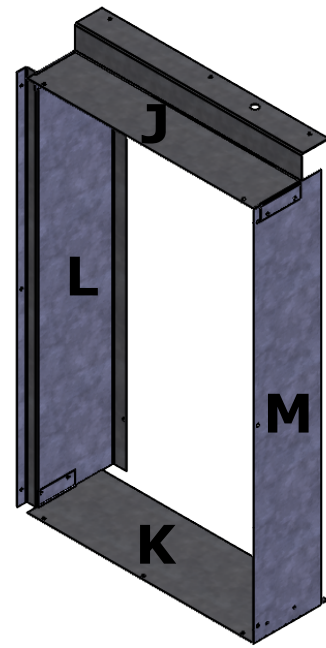


SMALL CABINET UNITS

ZF 078,090
ZH 037-090
ZJ 037-061
ZR 037-090

IN ORDER INSTALL:

1. PANEL H
2. PANEL I
3. PANEL J
4. PANEL K



LARGE CABINET UNITS

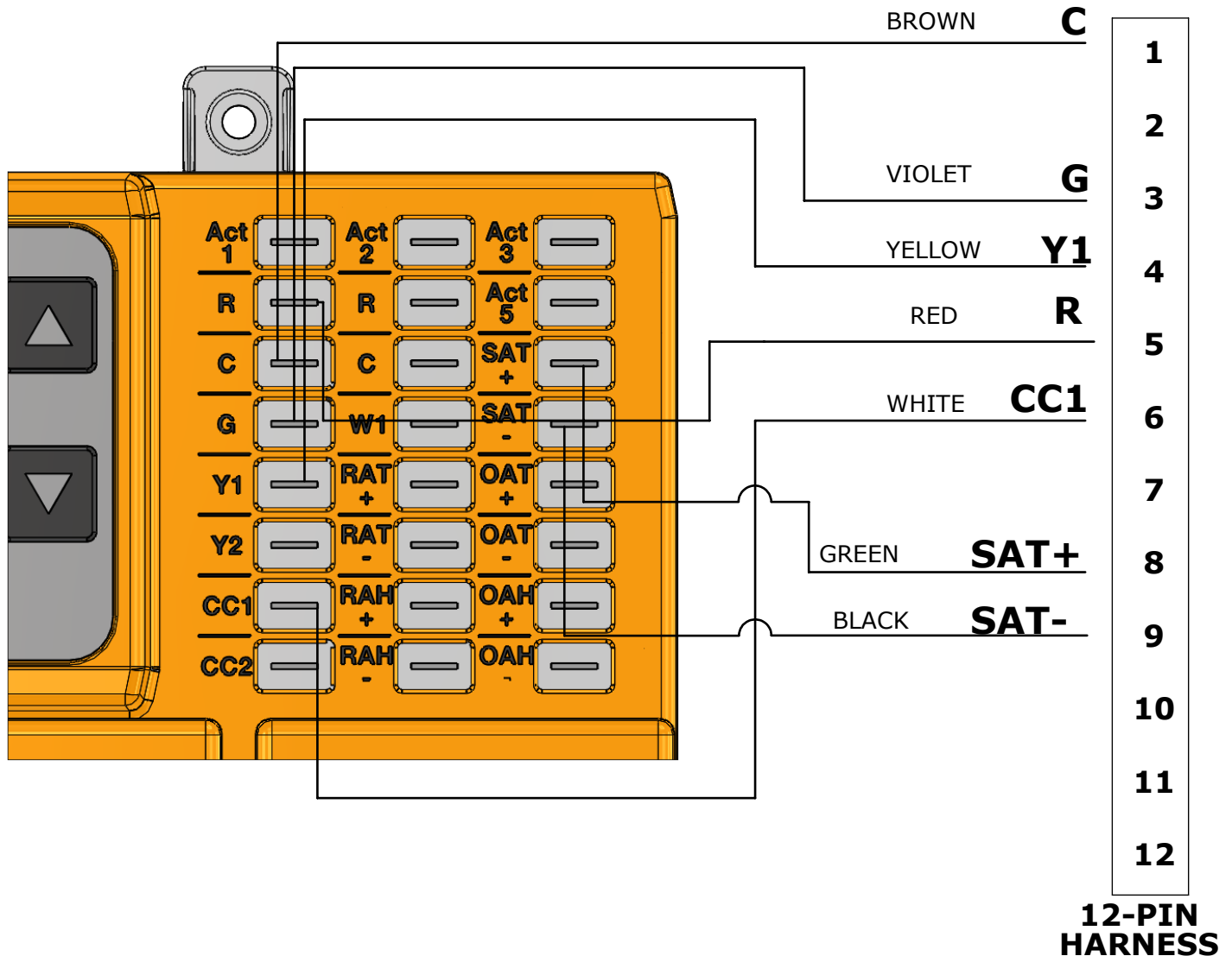
ZF 102-150
ZH 102-150
ZJ 078-150
ZR 102-150

IN ORDER INSTALL:

1. PANEL L
2. PANEL M
3. PANEL K
4. PANEL J

CAS PART NUMBER 9800467

12-Pin Wire Harness



CONNECTS
TO UNIT
PLUG

CAS PART NUMBER 9800467 HARNESS (PAGE 2)

