

## SUBMITTAL

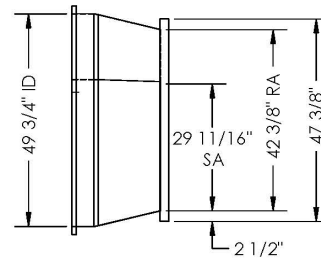
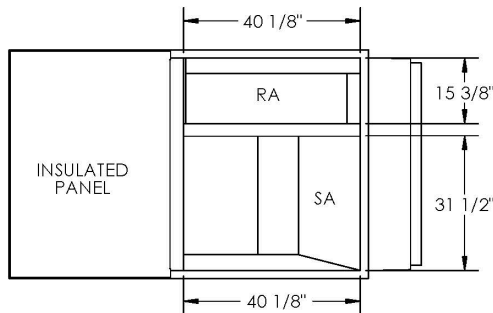
**Part Number  
2000104**

SUBMITTED TO \_\_\_\_\_  
 COMPANY \_\_\_\_\_  
 JOB NAME \_\_\_\_\_  
 EQUIPMENT \_\_\_\_\_  
 SIGNATURE \_\_\_\_\_  
 DATE \_\_\_\_\_

© 2007 COX ENGINEERING DBA CAMBRIDGEPORT AIR SYSTEMS.  
 THE INFORMATION CONTAINED IN THIS DOCUMENT IS PROPRIETARY TO  
 COX ENGINEERING COMPANY DBA CAMBRIDGEPORT AIR SYSTEMS.  
 THIS DOCUMENT OR THE INFORMATION CONTAINED IN WHOLE OR IN PART  
 MAY NOT BE ISSUED TO ANOTHER PARTY WITHOUT WRITTEN CONSENT AND  
 AUTHORIZATION FROM CAMBRIDGEPORT.

## SUBMITTAL

REVISIONS				
ZONE	REV.	DESCRIPTION	DATE	APPROVED

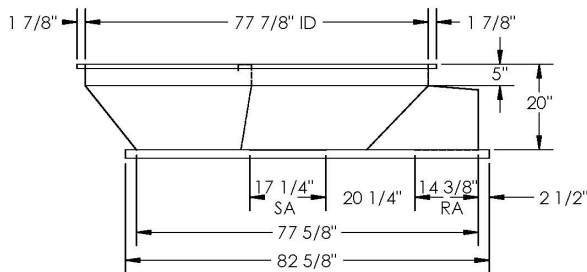


**FEATURES:**

1. ONE PIECE WELDED CONSTRUCTION
2. CURB ADAPTER MADE OF HEAVY GAUGE GALVANIZED STEEL.
3. ALL WELDS ARE COATED WITH A GALVANIZED COMPOUND.
4. GASKETING IS PROVIDED FOR UNIT TO CURB ADAPTER SEALING.
5. CURB ADAPTER IS FULLY INSULATED.
6. SUPPLY TRANSITION AND RETURN PLENUM INCLUDED.

Approved By: \_\_\_\_\_

Date: \_\_\_\_\_



**MATERIAL: 18GA.(0.0516) 192.5 LBS.**

<b>Cambridgeport</b>		NORTH 8 Parker Drive Salisbury Industrial Park Salisbury MA 01962	1-800-648-2872 1-877-648-2872	SOUTH 2529 Lamar Ave Lamar Industrial Park Memphis TN 38118
<b>HVAC Accessories &amp; Engineered Systems</b>				
UNLESS OTHERWISE SPECIFIED	CUST.:	DRAWN	RTG	DESCRIPTION:
TOLERANCES:	CUS.:	DATE:	01/22/17	ASS'Y, ADAPTER
DECIMALS = + .063	FRACIONS = + 1/16	ANGLES = ± 1°		
MATERIAL CONDITIONS	REMOVE ALL BURRS & SHARP EDGES	ALL DIMENSIONS ARE O.D.	DETAIL OF 2000104	SHEET 1 OF 1
SUBMITTAL NO. 2000104		PART NO. 2000104		REV.

## FEATURES

- ONE PIECE WELDED CONSTRUCTION
- FACTORY INSTALLED SUPPLY TRANSITIONS
- FULLY INSULATED
- DESIGNED FOR EVEN WEIGHT DISTRIBUTION
- FABRICATED OF HEAVY GAUGE G90 GALVANIZED STEEL
- ALL WELDS SPRAYED WITH GALVANIZING COMPOUND
- GASKET PROVIDED FOR UNIT TO ADAPTER SEALING

**CAMBRIDGEPORT STRONGLY RECOMMENDS CONFIRMING THE DIMENSIONS ON THIS SUBMITTAL**

CURB ADAPTERS ARE BASED ON UNIT MANUFACTURERS STANDARD CURB DIMENSIONS.  
 CAMBRIDGEPORT CANNOT BE RESPONSIBLE FOR ANY DEVIATIONS FROM FACTORY DIMENSIONS OR INCORRECT MODEL NUMBERS.