

## SUBMITTAL

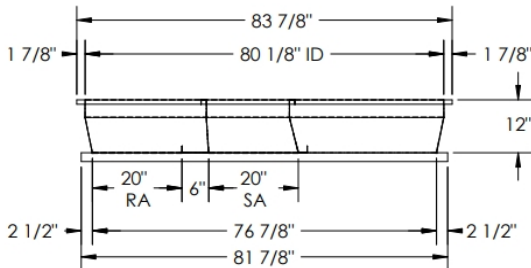
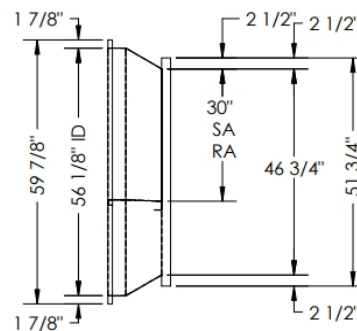
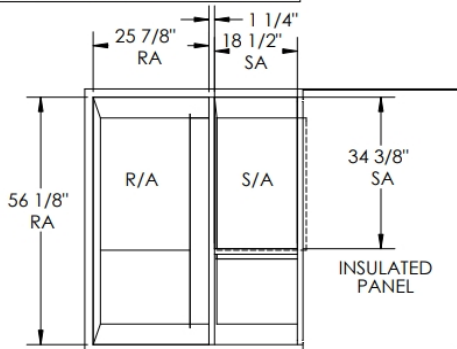
Part Number  
2017671

SUBMITTED TO \_\_\_\_\_  
 COMPANY \_\_\_\_\_  
 JOB NAME \_\_\_\_\_  
 EQUIPMENT \_\_\_\_\_  
 SIGNATURE \_\_\_\_\_  
 DATE \_\_\_\_\_

© 2018 COX ENGINEERING DBA CAMBRIDGEPORT AIR SYSTEMS.  
 THE INFORMATION CONTAINED IN THIS DOCUMENT IS PROPRIETARY TO  
 COX ENGINEERING COMPANY DBA CAMBRIDGEPORT AIR SYSTEMS.  
 THIS DOCUMENT OR THE INFORMATION CONTAINED IN WHOLE OR IN PART  
 MAY NOT BE ISSUED TO ANOTHER PARTY WITHOUT WRITTEN CONSENT AND  
 AUTHORIZATION FROM CAMBRIDGEPORT.

## SUBMITTAL

REVISIONS				
ZONE	REV.	DESCRIPTION	DATE	APPROVED



### FEATURES:

- ONE PIECE WELDED CONSTRUCTION
- CURB ADAPTER MADE OF HEAVY GAUGE GALVANIZED STEEL.
- ALL WELDS ARE COATED WITH A GALVANIZED COMPOUND.
- GASKETING IS PROVIDED FOR UNIT TO CURB ADAPTER SEALING.
- CURB ADAPTER IS FULLY INSULATED.
- SUPPLY TRANSITION AND RETURN PLENUM INCLUDED.

Approved By: \_\_\_\_\_

Date: \_\_\_\_\_

**MATERIAL: 18GA.(0.0516) 146.3 LBS.**

### FEATURES

- ONE PIECE WELDED CONSTRUCTION
- FACTORY INSTALLED SUPPLY TRANSITIONS
- FULLY INSULATED
- DESIGNED FOR EVEN WEIGHT DISTRIBUTION
- FABRICATED OF HEAVY GAUGE G90 GALVANIZED STEEL
- ALL WELDS SPRAYED WITH GALVANIZING COMPOUND
- GASKET PROVIDED FOR UNIT TO ADAPTER SEALING

<b>Cambridgeport</b>		4 CARLETON DRIVE GEORGETOWN, MA 01833 1-800-648-CURB(2872) 1-978-465-8481	
HVAC Accessories & Engineered Systems			
UNLESS OTHERWISE SPECIFIED	CUST. D.C.N.E.	DRAWN RTO	DESCRIPTION:
TOLERANCES:	JOB NO. -	DATE 05/03/22	ASS'Y. ADAPTER
DECIMALS = ± .003	NEW YORK DH078 (471)		
FRACTIONS = ± 1/16	NEW TRANE YHC120F (044)		
ANGLES = ± 1°			
MATERIAL CONDITIONS:	SUBMITTAL 2017671		
REMOVE ALL BURRS & SHARP EDGES	REV. 1		
ALL DIMENSIONS ARE O.D.	DETAIL OF 2017671	SHEET 1 OF 1	PART NO. 2017671

**CAMBRIDGEPORT STRONGLY RECOMMENDS CONFIRMING THE DIMENSIONS ON THIS SUBMITTAL**

CURB ADAPTERS ARE BASED ON UNIT MANUFACTURERS STANDARD CURB DIMENSIONS.  
 CAMBRIDGEPORT CANNOT BE RESPONSIBLE FOR ANY DEVIATIONS FROM FACTORY DIMENSIONS OR INCORRECT MODEL NUMBERS.